

Weather station XM-8635

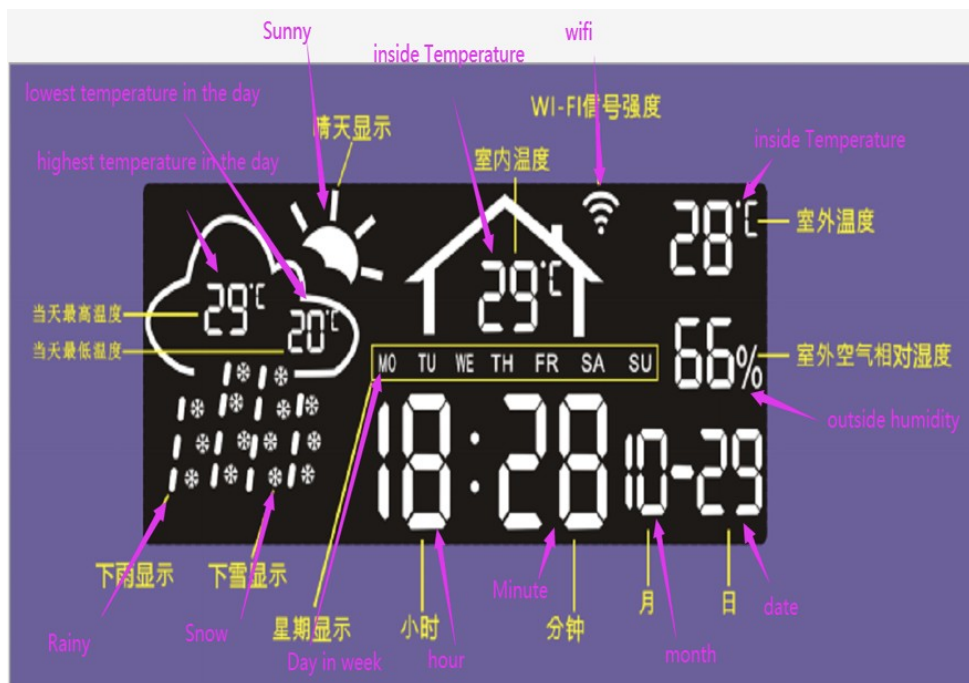
User manual

Technical specification

Working voltage	12 V / 24 V
Max. power	3.8 W
Max. current	0.2 mA
Display	3.5" (86 × 35 mm [L × W])
Shell size	110 × 61 × 11 mm [L × W × H]

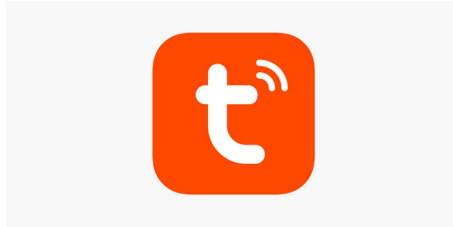


Information displayed on the screen



Weather station configuration

1. Download and install the Tuya Smart app from the Android or iOS app store.

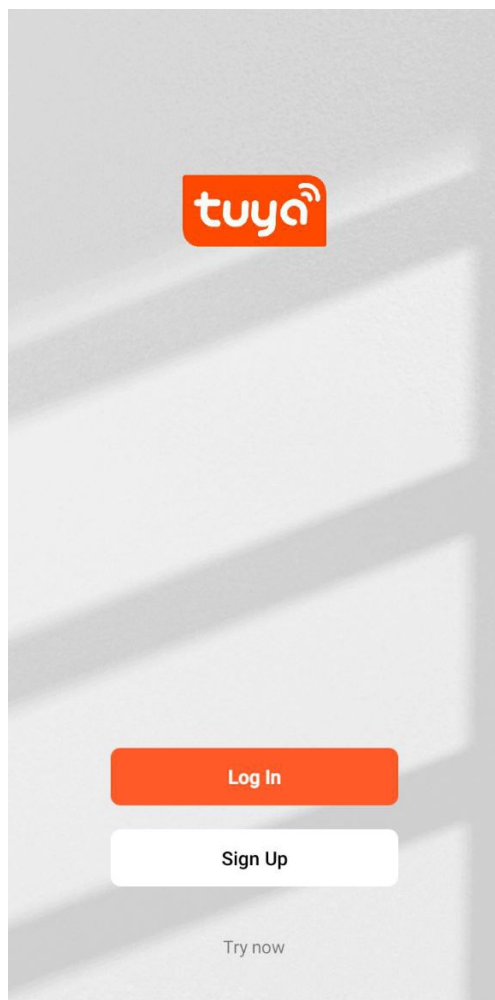


Android

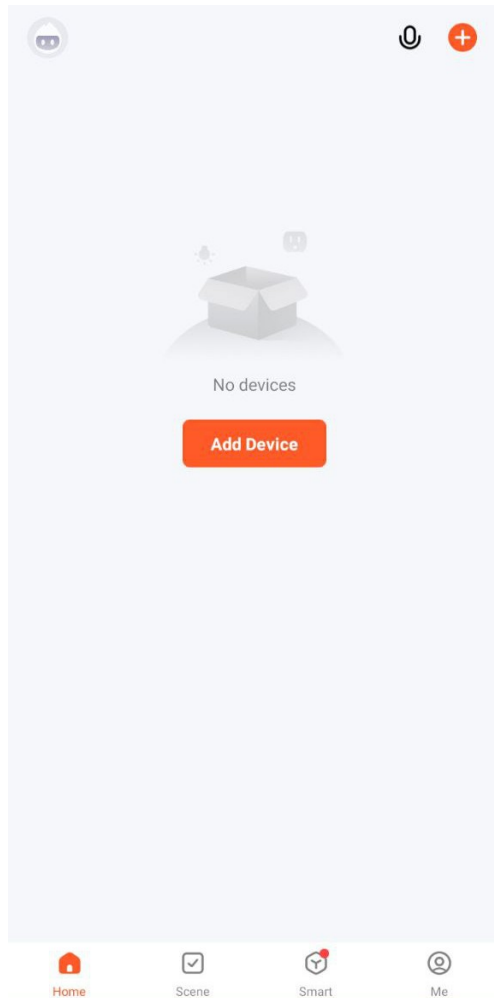


iOS

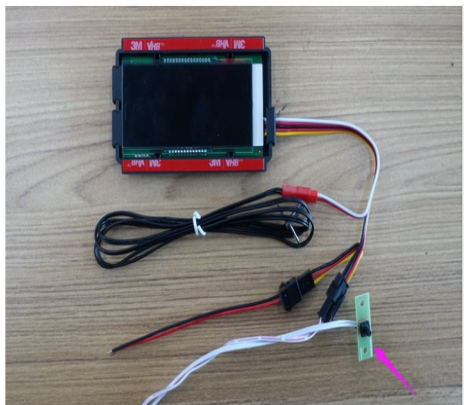
2. Run the Tuya Smart application. Then log in to your existing account or sign up.



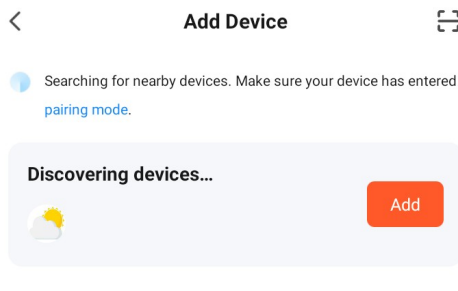
3. Press the "+" symbol or select "Add device" and grant the required permissions for the Tuya Smart application.



4. Hold down the button (XM319 series button can be used) for 3 seconds, the Wi-Fi symbol on the weather station screen should be blinking.



- Press "Add" to add the weather station and enter the password for your Wi-Fi network (only 2.4 GHz network is supported).



Dodaj ręcznie

Inżynieria elektryczna

Oświetlenie



Gniazdo elektr.
(BLE+Wi-Fi)

Socket



Gniazdo elektr.
(Wi-Fi)



Gniazdo elektr.
(Zigbee)

Czujnik ochrony

Duże urządzenia...



Gniazdo elektr.
(BLE)



Gniazdo elektr.
(NB-IoT)



Gniazdo elektr.
(other)

Małe urządzenia...

Urządzenie kuchenne

Power Strip



Power Strip
(BLE+Wi-Fi)



Wiele gniazd
(Wi-Fi)



Wiele gniazd
(Zigbee)

Urządzenie medyczne...

Nadzór wideo





Anuluj

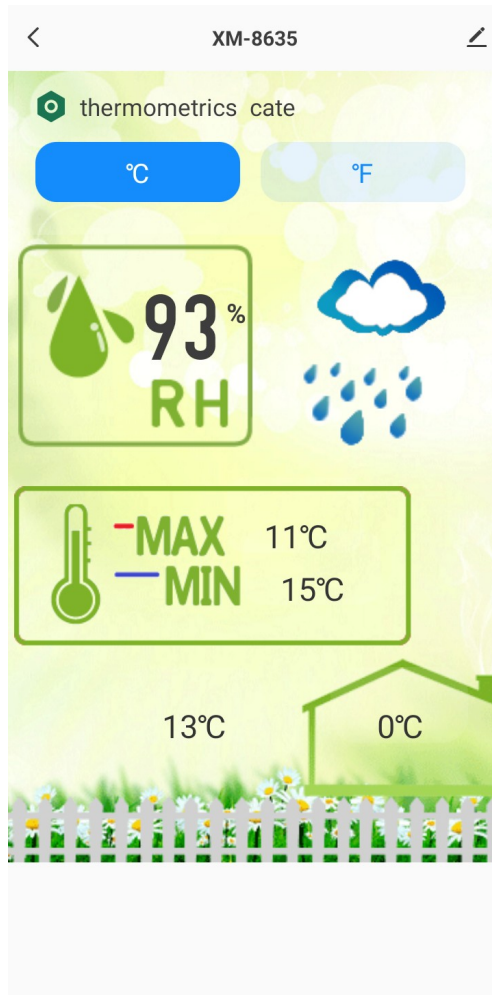
Choose Wi-Fi and enter password

 FDS_System 

Dalej

- Once the weather station is properly paired with the Tuya Smart app, you should see a screen like this with the ability to choose what unit you want the temperature to be displayed in.





Wiring diagram

